

# Cambridge Case Study

## Automotive Parts Warehouse

Detroit, MI



### BUILDING DETAILS

**Size:** 89,600 sq.ft. x 30 ft. High

**Construction:** R-19 Roof

R-19 Walls

### OPERATING CONDITIONS

**Operating Hours:** 12 hrs/day 5 days/wk

**Design Temperature:** 65° @ 0°

**Thermostat Settings:** 65° occupied / 55° setback

**Average Temperature:** 63°

**Heating System:** Cambridge Space Heaters  
2 @ 1170 MBH  
Thru wall mounting

### ACTUAL FUEL USE

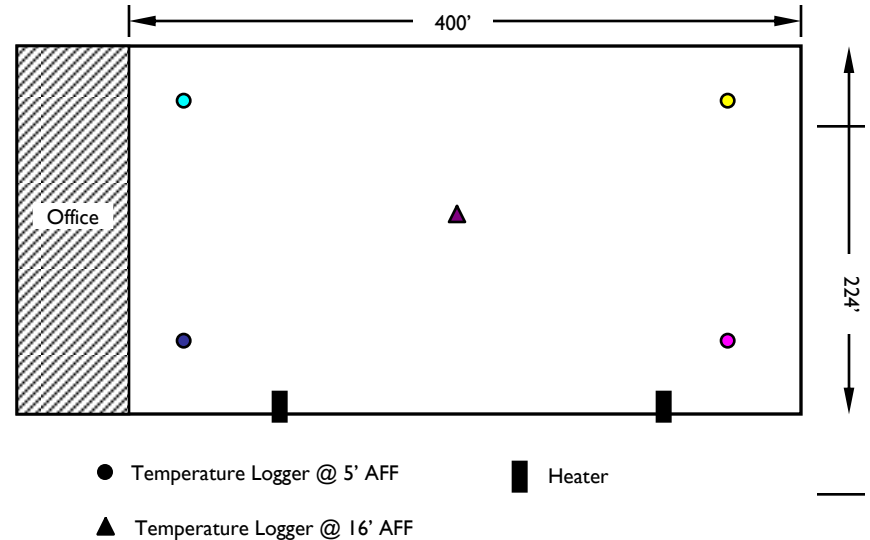
for the 1999-2000 heating season (5647 Heating Degree Days @ 65°)

**3.5 Btu / HDD / sq. ft.**

### CALCULATED OPERATING COST

for normal heating season (6440 Heating Degree Days @ 65°)

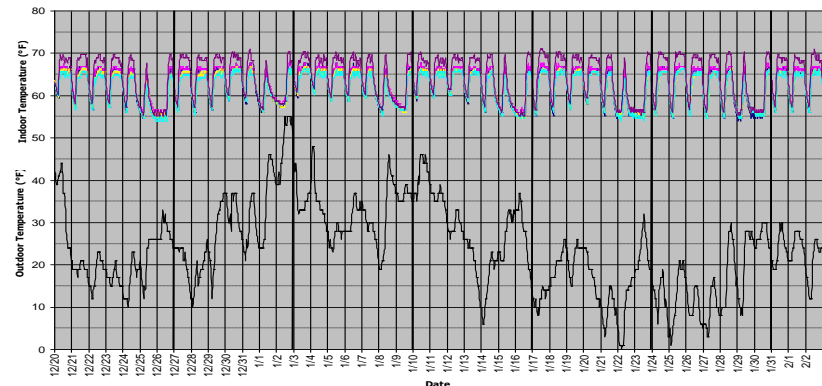
**\$0.11 / sq.ft.** (Gas only @ \$0.50/therm)



### DATALOGGER GRAPH

**Logging period:** 12/20/99 - 2/2/00

**Logging interval:** 30 minutes



760 Long Road Crossing Dr. • Chesterfield MO 63005  
800-899-1989 • www.cambridge-eng.com